

MMM Juval at Juval Castle

Description

This castle stands on a site of prehistoric interest, and was built in 1278 by Hugo von Montalban. In 1368 it belonged to the Starkenberg family, but in 1540, after several changes of ownership, it was bought by the Sinkmoser family under who it came to the apex of its splendour. It then passed into the hands of the Hendi house who sold it on to the farmer Josef Blaas in 1813, and the castle fell into ruin. In 1913 it was bought by the Dutch farmer William Rowland who dedicated himself to the castle's exemplary renovation. Since 1983 it has been the home of Reinhold Messner, who in the museum devoted to mountains and mountain life, has also collected many works of art. Reinhold Messner has renovated the castle while managing to respect the three different stages of the the construction of the original building.

Categories: Castles, palaces, stately homes, residences, fortresses, Museums

Setting: rural, high mountain, woods, rocky

Topic: rustic, romantic, idyllic, buildings of historical/artistic interest, isolated

Architectural style: Gothic, Middle Ages

Facade: rendered facade, natural stone facade, stucco / ornament facade

Furniture style: design, Neo-Baroque, Baroque

Water: ✓

Electricity: ✓

Elevator: ✗

Parking: ✓

Access for passenger cars





© Georg Tappeiner



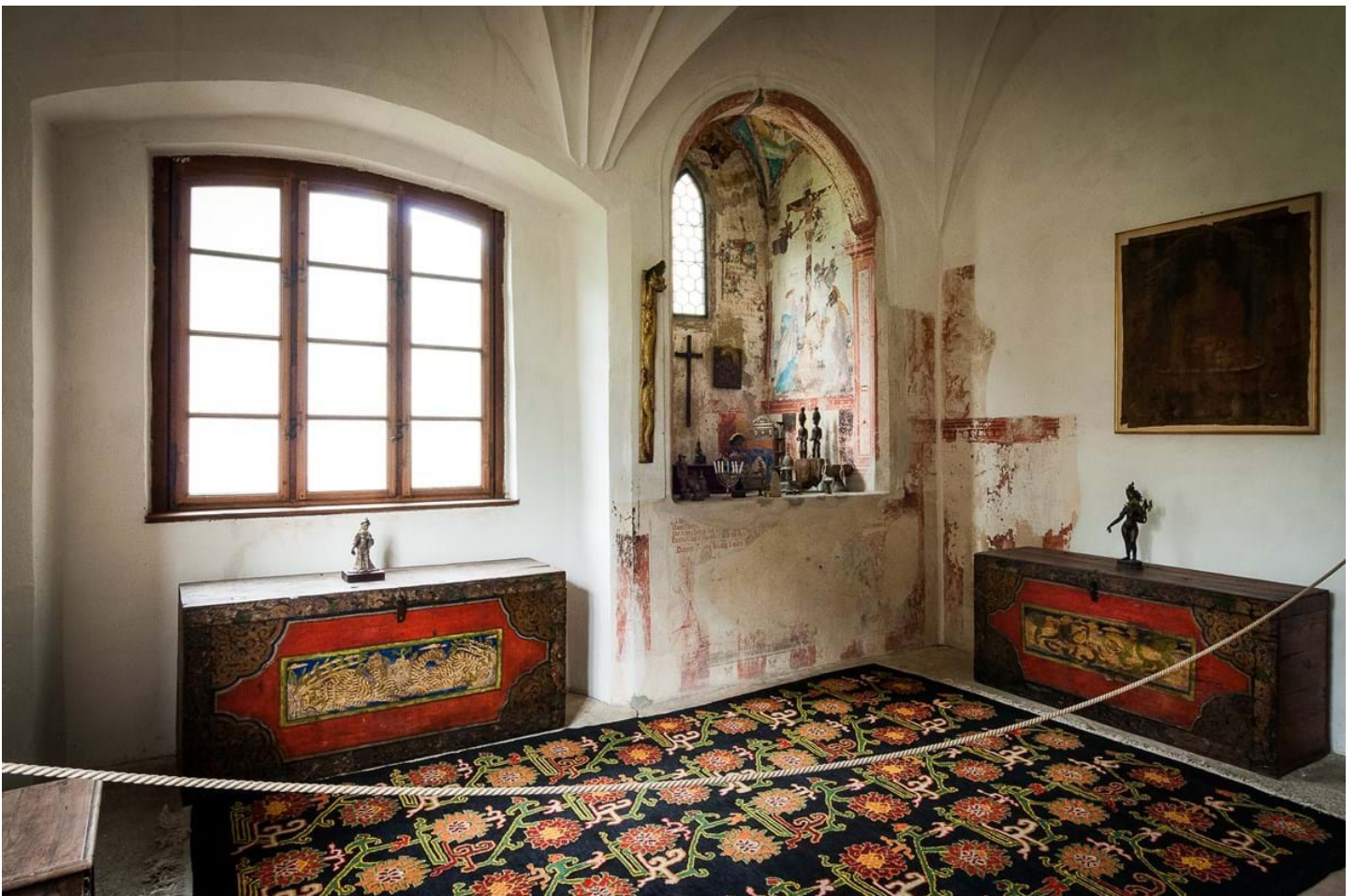
© Giuseppe Ghedina



© Georg Tappeiner



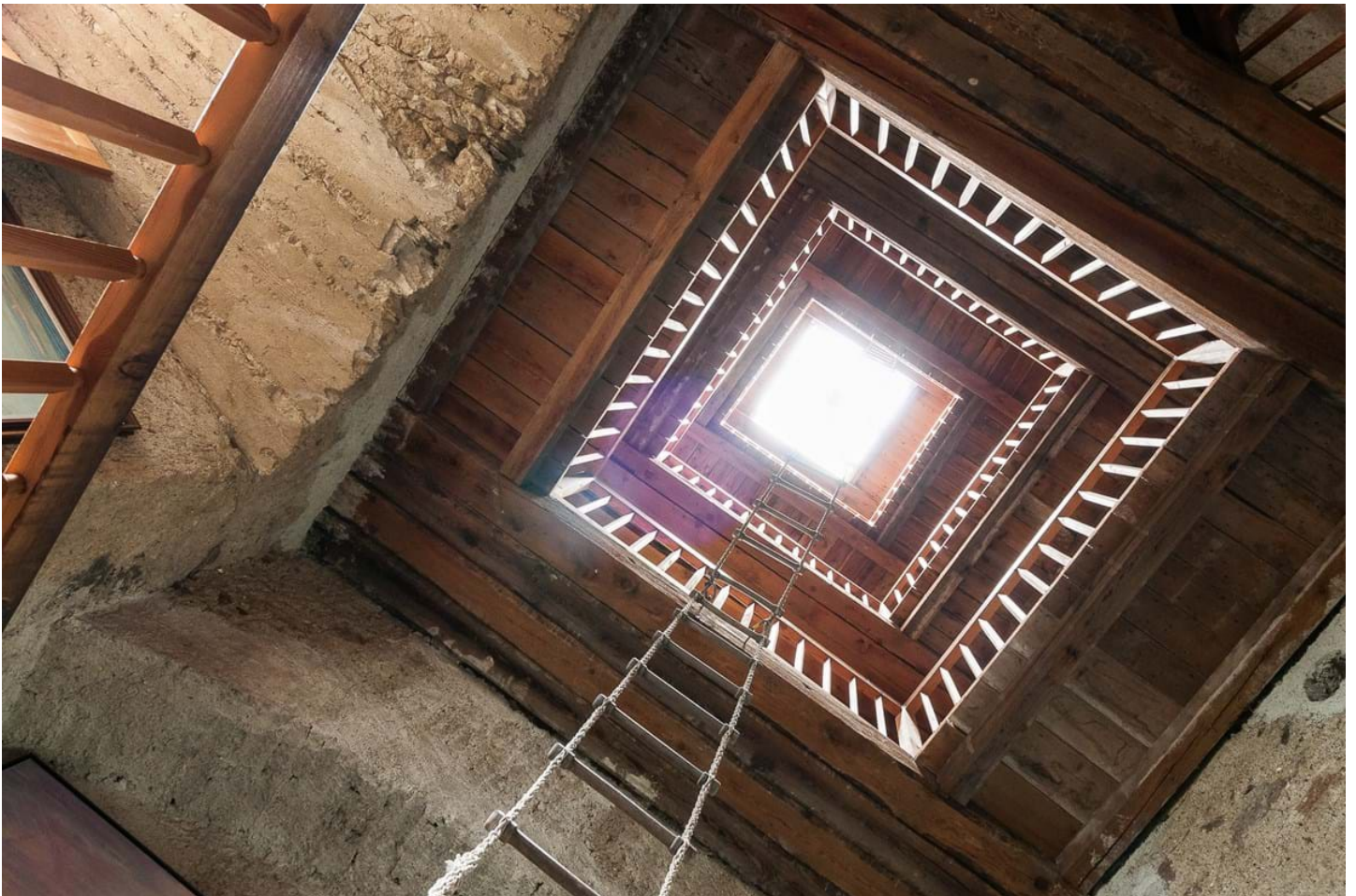
© Giuseppe Ghedina



© Giuseppe Ghedina



© Giuseppe Ghedina



© Giuseppe Ghedina



© Georg Tappeiner



© Georg Tappeiner