

Mercantile Palace - inner courtyard with skylight

Description

The Mercantile Palace was built in Baroque style between 1708 and 1727 on a design by the architect Francesco Perotti of Verona, and was originally used as the headquarters of the Mercantile Court and the Mercantile Magistracy. In addition to the administrative functions it carried out for the town's merchants, the Palace (located between Via Argentieri and Via dei Portici) also played an important social role: it was the symbol of the impressive economic growth of Bolzano, thanks to the particular privileges deriving from the fairs held there. The Palace later housed the Chamber of Commerce, which remained there until 1979. Today the building is home to the Mercantile Museum, featuring a magnificent collection of original documents, paintings and furnishings from the 17th and 18th centuries that illustrate the economic history of a region situated at a strategic point on the trade routes that crossed the Alps. Within the limits set by the regulations governing national monuments, there are many places here suitable for filming, in particular the large porticoed courtyard and the staircase leading to the Hall of Honour, the small inner courtyard with a skylight window, the Chancellery with its original furnishings, the meeting room and the Hall of Honour, featuring a frescoed ceiling and a magnificent collection of paintings.

Address

Silbergasse 6 - Lauben 39 / via degli argentieri 6 - portici 6
39100 - Bozen - Bolzano

Permission

Handelskammer Bozen / Camera di commercio di Bolzano Andrea Bertoli
Südtiroler Straße 60 / via Alto Adige 60
39100 - Bozen / Bolzano
Phone [+39 0471 945617](tel:+390471945617)
E-mail bertoli@handelskammer.bz.it

Categories: Castles, palaces, stately homes, residences, fortresses, Museums

Setting: urban

Topic: italian

Architectural style: Baroque

Facade: rendered facade, stucco / ornament facade

Furniture style: Neo-Baroque, Baroque

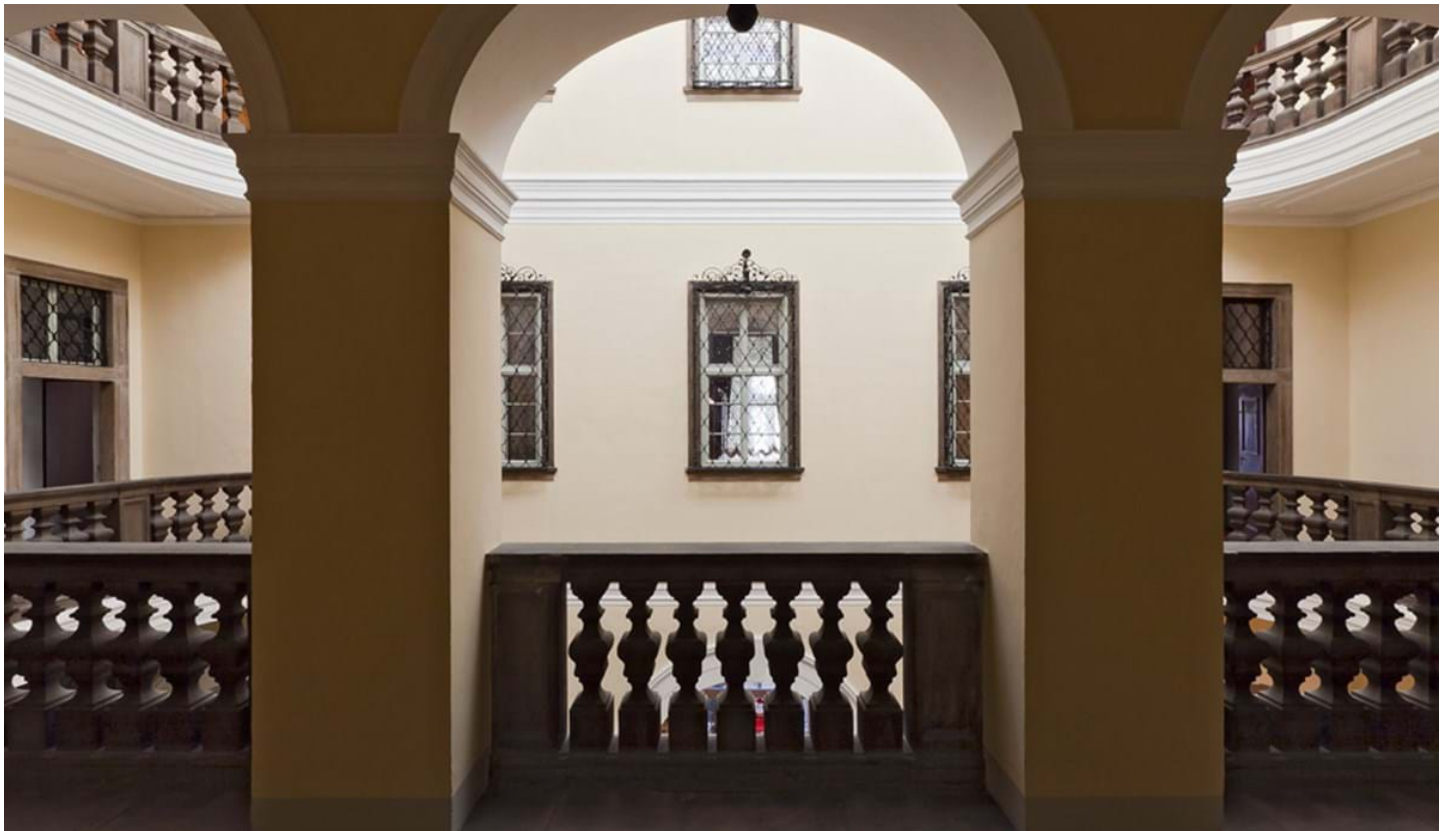
Water: ✓

Electricity: ✓

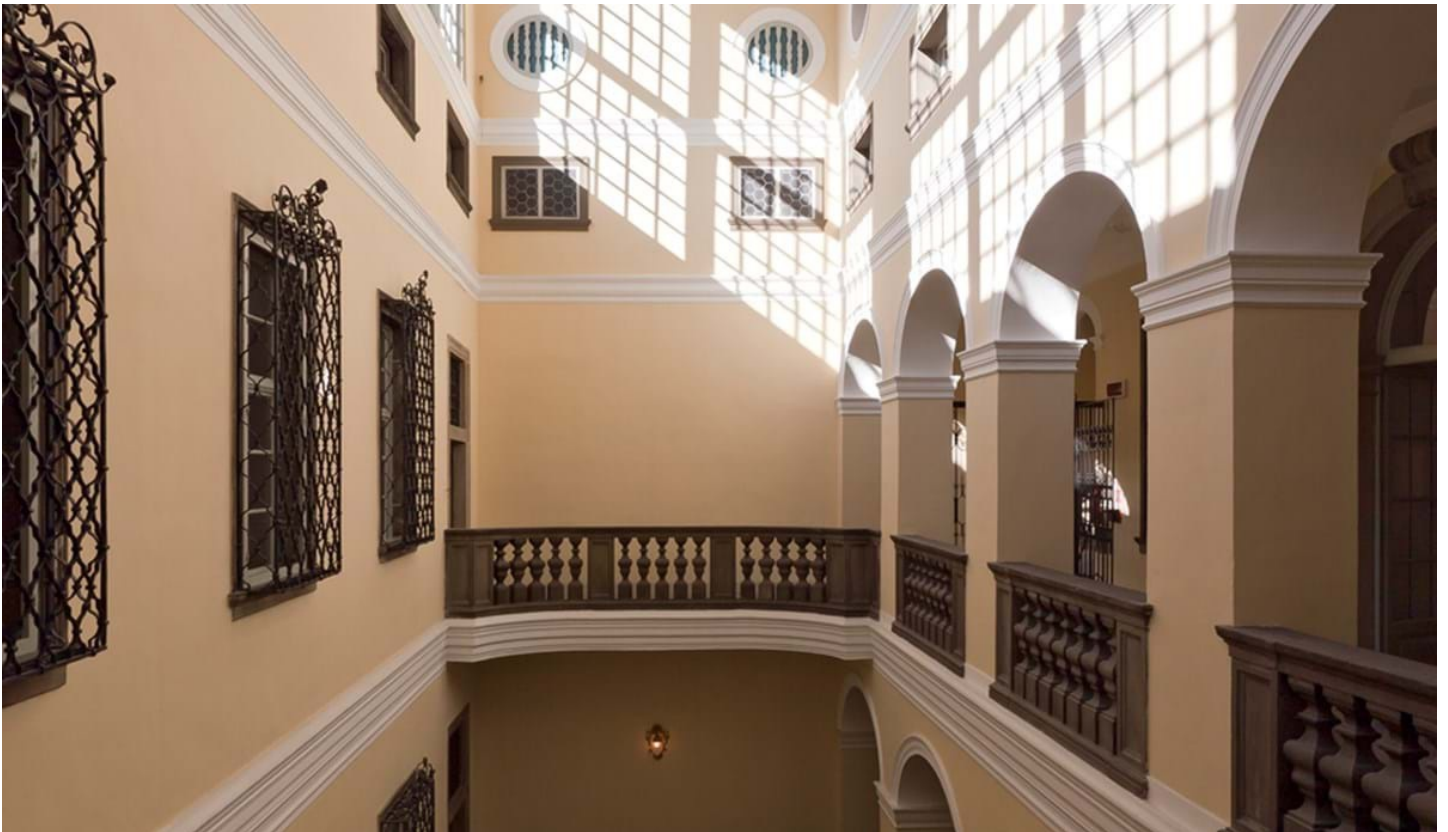
Elevator: ✗

Parking: ✗

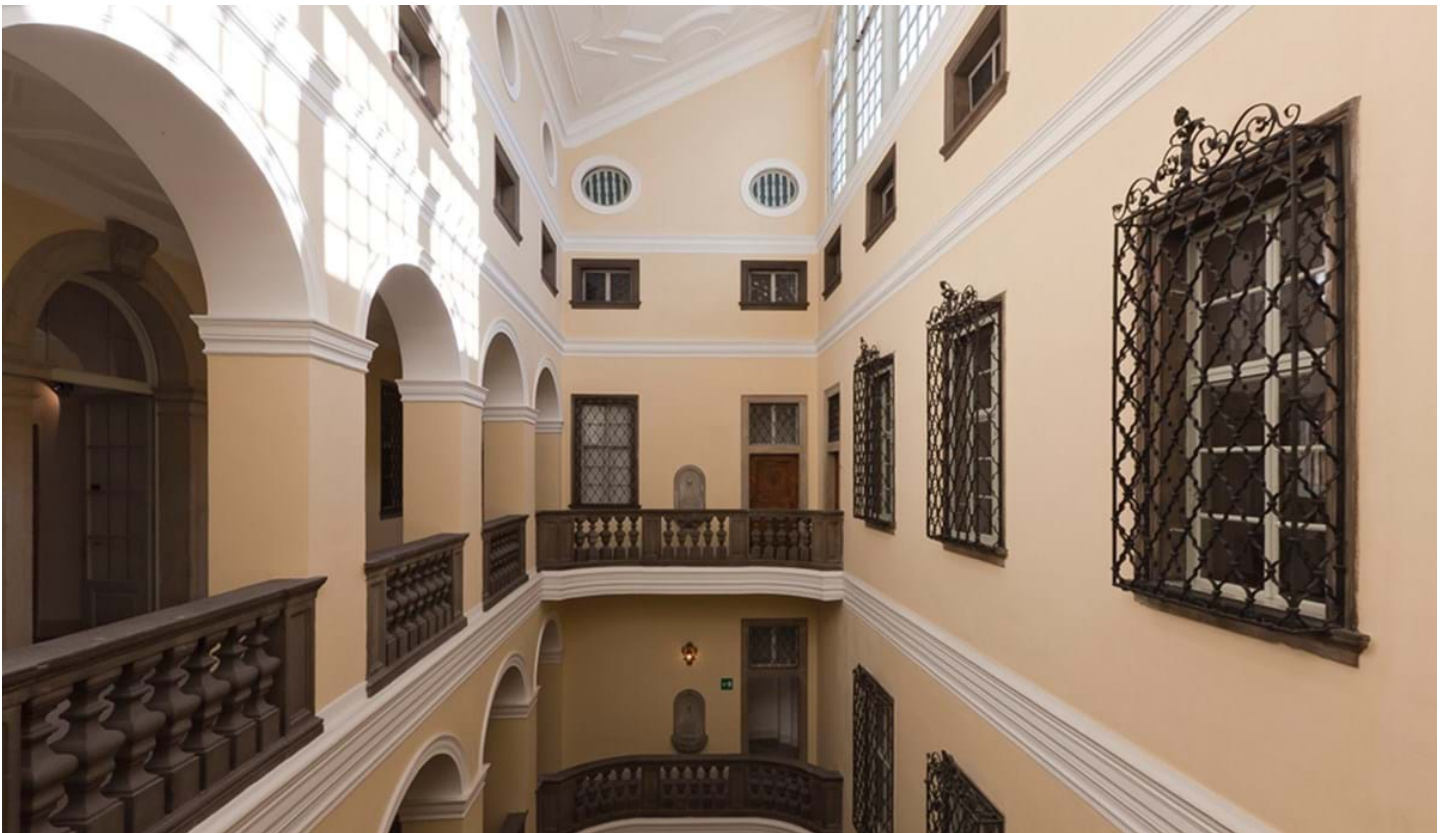
Access for: passenger cars, commercial vehicles



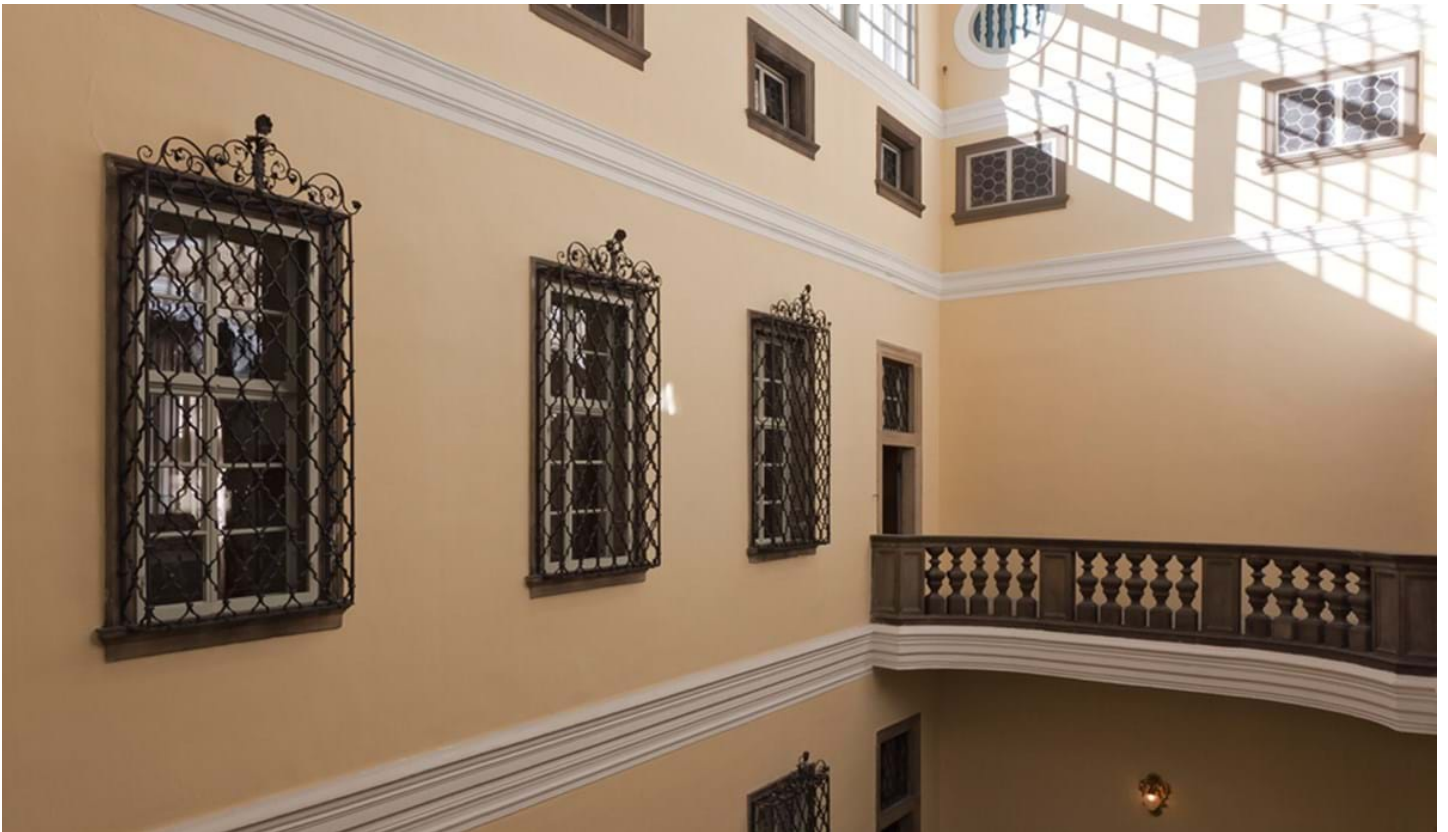
Florian Mohn, © Florian Mohn



Florian Mohn, © Florian Mohn



Florian Mohn, © Florian Mohn



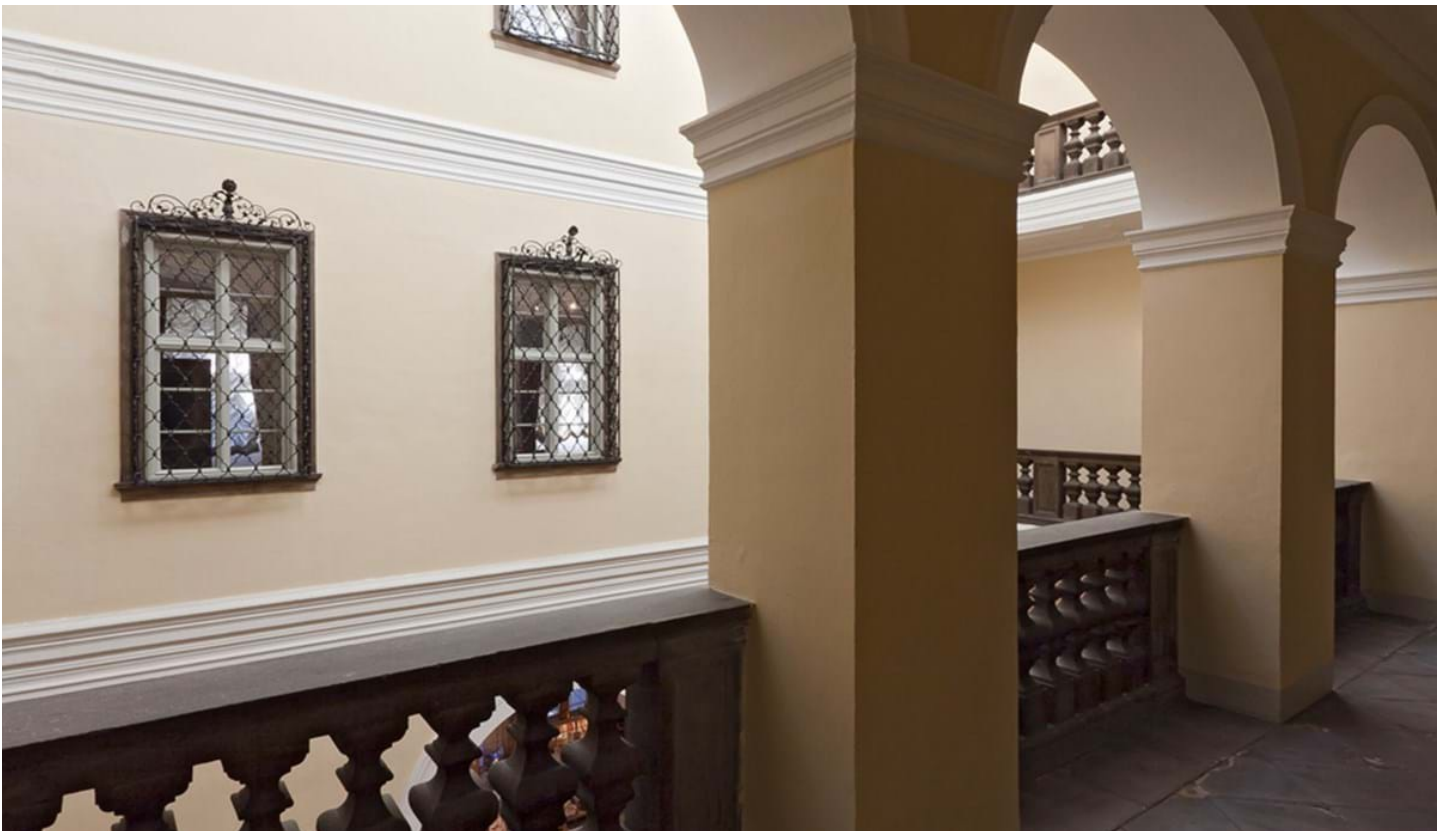
Florian Mohn, © Florian Mohn



Florian Mohn, © Florian Mohn



Florian Mohn, © Florian Mohn



Florian Mohn, © Florian Mohn



Florian Mohn, © Florian Mohn



Florian Mohn, © Florian Mohn