

Hotel Gasthof Grüner Baum

Description

The "Grüner Baum" is located in the center of Glurns (Glorenza). The historical part of the building dates back to around 1500, while the stube is about 300 years old. The hotel was reopened in 2004 after being closed for 30 years and thoroughly refurbished. During the construction work, some modern-day elements were added and carefully blended into the building's historical structure. The rooms are all custom designed and there is a courtyard, which two of the hotel's floors overlook, in addition to a penthouse with a panoramic view of the Ortler, the highest mountain in Alto Adige.

Categories: Hotels

Setting: rural

Topic: traditional, rustic, elegant, buildings of historical/artistic interest

Architectural style: Historicism

Facade: rendered facade

Furniture style: rural / rustic, modern classic

Water: ✓

Electricity: ✓

Elevator: ✓

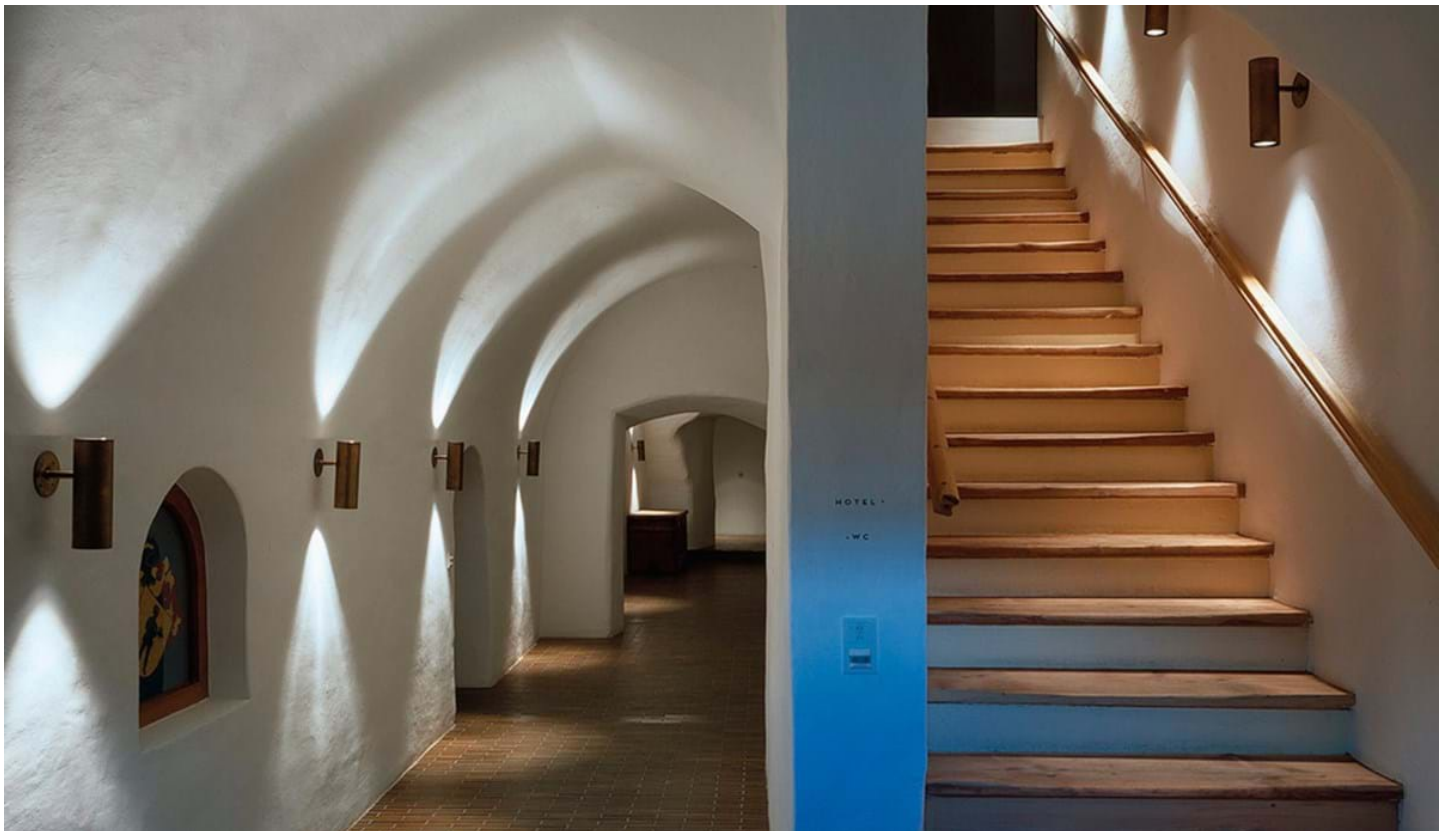
Parking: ✗

Access for: passenger cars, commercial vehicles





© Hotel Gasthof Grüner Baum



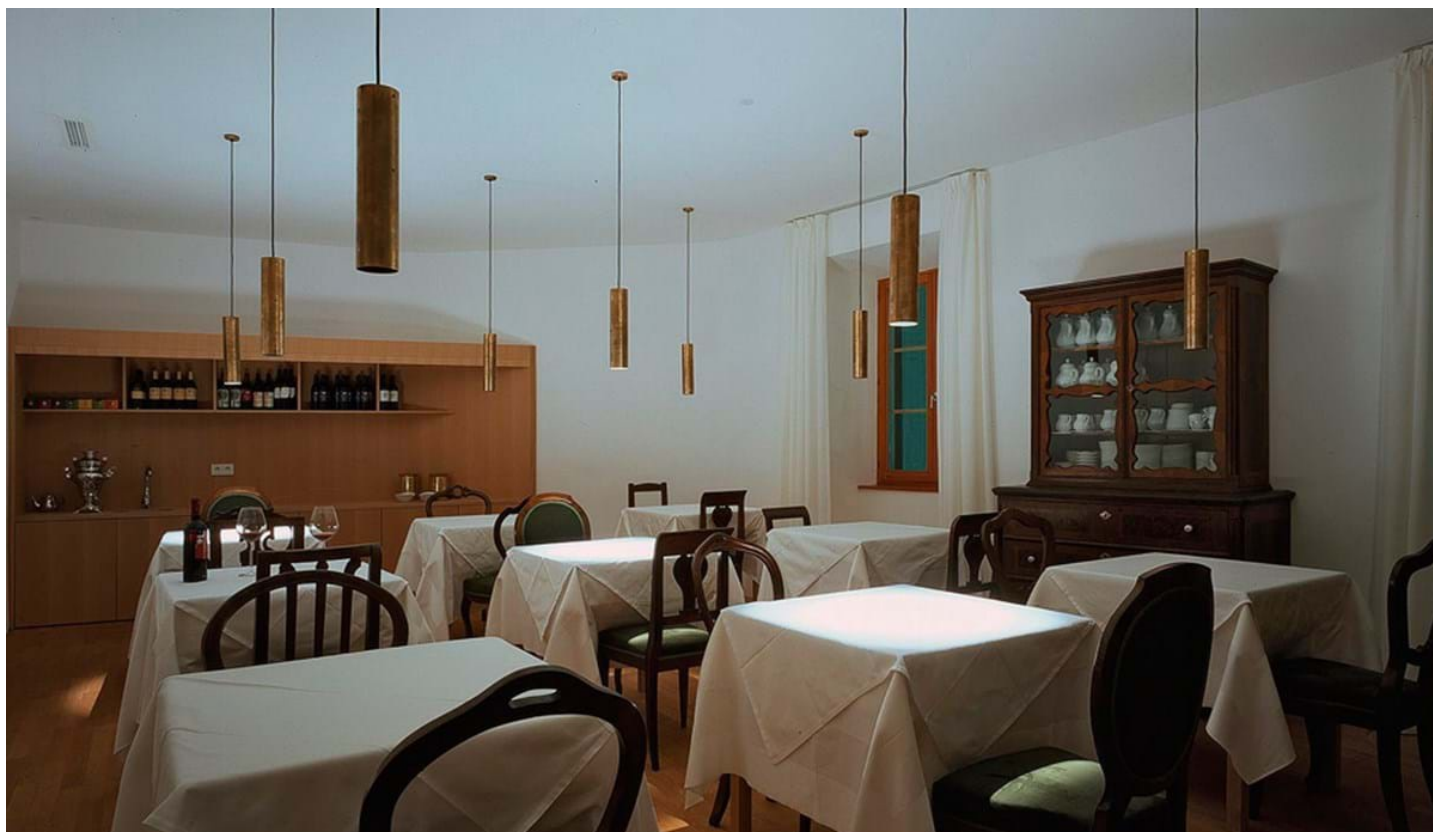
© Hotel Gasthof Grüner Baum



© Hotel Gasthof Grüner Baum



© Hotel Gasthof Grüner Baum



© Hotel Gasthof Grüner Baum



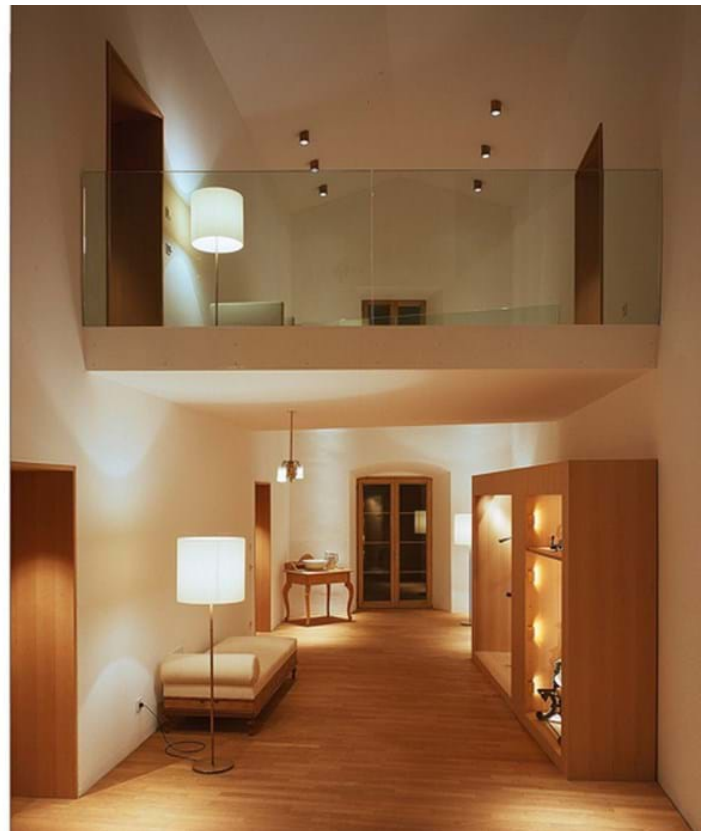
© Hotel Gasthof Grüner Baum



© Florian Mohn

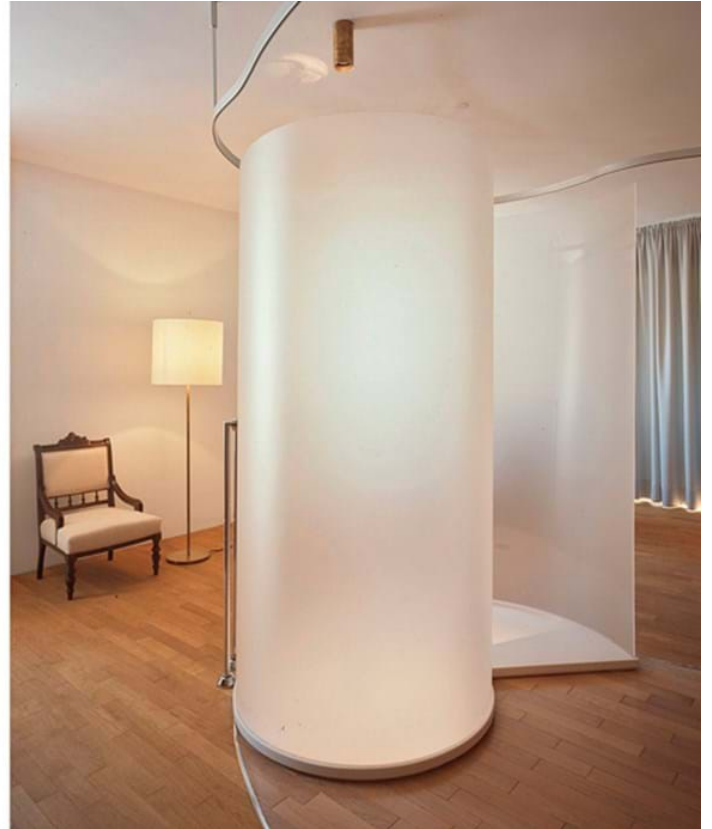


© Florian Mohn





© Florian Mohn



© Hotel Gasthof Grüner Baum



© Hotel Gasthof Grüner Baum



© Florian Mohn





© Hotel Gasthof Grüner Baum



© Florian Mohn

